

# MOBOTIX Product Overview



The HiRes Video Company

**MOBOTIX**

## Allround



### M22M

- **Exchangeable lens camera** for indoor/outdoor use (IP65)
- **3MEGA-resolution** (QXGA, 2048x1536 pixels)
- Exchangeable lenses from Super Wide-Angle (90°) to tele (15°); optional with C-/CS-Vario
- Color sensor 1 lux at 1/60 sec, 0.05 lux at 1 sec exposure time
- Microphone and speaker with full audio functionality (VoIP and SIP telephony with video)
- Universal wall/ceiling mount perfectly covers RJ45 outlets and conceals the cabling
- Internal DVR (up to 8 GB) possible, recording without network load

## DualNight



### M12D

- **Dual camera** with brilliant image color quality during the day and highest sensitivity at night thanks to **two separate image sensors for color and B/W**, for indoor and outdoor (IP65)
- **3MEGA-resolution** (QXGA, 2048x1536 pixels)
- B/W sensor (at night or IR lighting): 0.1 lux at 1/60 sec, 0.005 lux at 1 sec exposure time
- PIR sensor for motion detection in the dark
- Microphone and speaker with full audio functionality (VoIP and SIP telephony with video)
- Integrated switch functions (1 x signal input, 1 x signal output), RS232
- Internal DVR (16 GB), recording without network load

## MonoDome



### D22M

- **FixDome camera** for flexible mounting, for indoor and outdoor (IP65)
- **Optional vandalism, On-Wall and In-Ceiling sets**
- **3MEGA-resolution** (QXGA, 2048x1536 pixels)
- Exchangeable lenses from Super Wide-Angle (90°) to tele (15°)
- Color sensor 1 lux at 1/60 sec, 0.05 lux at 1 sec exposure time
- Vandalism set consists of stainless steel ring (polished, matt, powder-coated) and reinforced dome
- On-Wall set features concealed cabling, space for expansion modules (batteries, UMTS, WiFi, etc.)
- Outdoor wall mount (IP65) with space for expansion modules
- Internal DVR (16 GB), recording without network load

## DualDome



### D12D

- **DualDome camera with two individually positionable image sensors**, for indoor & outdoor (IP65)
- Simultaneous monitoring of different room areas using two separately directionable lenses
- **3MEGA-resolution** (QXGA, 2048x1536 pixels)
- 180° panorama
- PIR sensor for motion detection in the dark
- Microphone and speaker with full audio functionality (VoIP and SIP telephony with video)
- Integrated switch functions (2 x signal input, 2 x signal output), RS232
- Internal DVR (16 GB), recording without network load

## Hemispheric



### Q22M

- **Hemispheric camera with 360° allround view** for complete room monitoring
- Without mechanically moving parts, robust and maintenance free, for indoor and outdoor (IP65)
- Digital, continuous 8x zoom and panning
- Event-controlled **360° recording**, directly in the camera with SD card support
- Alarm functions, speaker and microphone installed
- Perfect design with low installation height for in-ceiling mounting
- Compatible with all D22 accessories
- Internal DVR (16GB), recording without network load

HiRes  
**3 Megapixel**  
 2048 x 1536  
 software zoom

Skyline  
**Format free**  
 each imageformat  
 freely definable

**30 Frames/s**  
 VGA (640 x 480)  
 10 F/s Mega

**Virtual PTZ**  
 digital pan, tilt,  
 zoom,

**Backlight**  
 safe using CMOS  
 without mechanical iris

**Internal DVR**  
 internal via SD card,  
 external via Network

Win/Lin/Mac  
**Recording**  
 via Network on PC  
 up to 1 Terabyte

microphone & speaker  
**Audio**  
 bi-directional via IP  
 variable framerates

SIP-Client with video  
**IP-Telephony**  
 alarm notify,  
 cam remote control

**Video motion**  
 multiple windows  
 precision pixel-based

-22°F ... +140°F  
**Weatherproof**  
 -30° ... +60°C, IP65  
 no heating necessary

IEEE 802.3af  
**PoE**  
 network power  
 even in winter

**Robust**  
 no moving parts  
 fiber glass housing

MxCC  
**Licence free**  
 Video-Management-  
 Software

*For further information:*  
**Tritech Associates Inc.**  
 732.282.1444 or charlesberner@taisecurity.com

HiRes Video Innovations

The German company MOB and its decentralized concept has made high-resolution video systems cost efficient.

MOBOTIX AG • D-67657 Kaiserslautern • Tel: +49-631-3033-103 • Fax: +49-631-3033-190 • sales@mobotix.com



**Model:** M22M-IT-D22  
**Indoor/Outdoor:** In/Outdoor, weatherproof, -30°...+60°C  
**Lenses: (eq. 35mm)** Super Wide Angle (22mm, 90°, F 2.0)  
**Resolution:** VGA (640x480 pixels), color  
**Pan/Tilt/Zoom:** continuous 8x zoom & pan/tilt (digital)  
**Frame Rate (Mono):** 30 fps VGA • 30 fps CIF  
**Sensitivity:** 1 lux (t=1/60sec) • 0,05 lux (t=1/1sec)  
**Interfaces:** Ethernet 10/100 Mbps  
**Internal DVR:** ./.  
**Audio/Telephony:** bidirectional, VoIP, IP-Telephony  
**Power Sup. • In/Out:** PoE or MX30V • via ExtIO  
**Software Features:** FTP, E-Mail, video alarm management, video motion, Multiview, event search  
**Arming • Triggering:** 365 day schedule • multiple events  
**External Storage:** up to 1 Terabyte on PC/Server/NAS



**Model:** M22M-Sec  
**Indoor/Outdoor:** In/Outdoor, weatherproof, -30°...+60°C  
**Lenses:** Super Wide Angle (22mm, 90°, F 2.0), 32mm, 43mm, 65mm, 135mm  
**Resolution:** 3MEGA (2048x1536 pixels), color  
**Pan/Tilt/Zoom:** continuous 8x zoom & pan/tilt (digital)  
**Frame Rate (Mono):** 30 fps VGA • 30 fps CIF • 10 fps Mega  
**Sensitivity:** 1 lux (t=1/60sec) • 0,05 lux (t=1/1sec)  
**Interfaces:** Ethernet 10/100 Mbps  
**Internal DVR:** ./.  
**Audio/Telephony:** bidirectional, VoIP, IP-Telephony  
**Power Sup. • In/Out:** PoE or MX30V • via ExtIO  
**Software Features:** FTP, E-Mail, video alarm management, video motion, Multiview, event search  
**Arming • Triggering:** 365 day schedule • multiple events  
**External Storage:** up to 1 Terabyte on PC/Server/NAS



**Model:** M22M-Sec-Night  
**Indoor/Outdoor:** In/Outdoor, weatherproof, -30°...+60°C  
**Lenses:** Super Wide Angle (22mm, 90°, F 2.0), 32mm, 43mm, 65mm, 135mm  
**Resolution:** MEGA (1280x960 pixels), B/W  
**Pan/Tilt/Zoom:** continuous 8x zoom & pan/tilt (digital)  
**Frame Rate (Mono):** 30 fps VGA • 30 fps CIF • 10 fps Mega  
**Sensitivity:** 0,1 lux (t=1/60sec) • 0,005 lux (t=1/1sec)  
**Interfaces:** Ethernet 10/100 Mbps  
**Internal DVR:** ./.  
**Audio/Telephony:** bidirectional, VoIP, IP-Telephony  
**Power Sup. • In/Out:** PoE or MX30V • via ExtIO  
**Software Features:** FTP, E-Mail, video alarm management, video motion, Multiview, event search  
**Arming • Triggering:** 365 day schedule • multiple events  
**External Storage:** up to 1 Terabyte on PC/Server/NAS



**Model:** M22M-Sec-CSVario  
**Indoor/Outdoor:** In/Outdoor, weatherproof, -30°...+60°C  
**Lenses:** CS-Mount Vario 24-54 (24 bis 54mm) F 1.6-2.3  
**Resolution:** 3MEGA (2048x1536 pixels), color  
**Pan/Tilt/Zoom:** continuous 8x zoom & pan/tilt (digital)  
**Frame Rate (Mono):** 30 fps VGA • 30 fps CIF • 10 fps Mega  
**Sensitivity:** 1 lux (t=1/60sec) • 0,05 lux (t=1/1sec)  
**Interfaces:** Ethernet 10/100 Mbps  
**Internal DVR:** ./.  
**Audio/Telephony:** bidirectional, VoIP, IP-Telephony  
**Power Sup. • In/Out:** PoE or MX30V • via ExtIO  
**Software Features:** FTP, E-Mail, video alarm management, video motion, Multiview, event search  
**Arming • Triggering:** 365 day schedule • multiple events  
**External Storage:** up to 1 Terabyte on PC/Server/NAS



**Model:** M22M-Sec-R8  
**Indoor/Outdoor:** In/Outdoor, weatherproof, -30°...+60°C  
**Lenses:** Super Wide Angle (22mm, 90°, F 2.0), 32mm, 43mm, 65mm, 135mm  
**Resolution:** 3MEGA (2048x1536 pixels), color  
**Pan/Tilt/Zoom:** continuous 8x zoom & pan/tilt (digital)  
**Frame Rate (Mono):** 30 fps VGA • 30 fps CIF • 10 fps Mega  
**Sensitivity:** 1 lux (t=1/60sec) • 0,05 lux (t=1/1sec)  
**Interfaces:** Ethernet 10/100 Mbps  
**Internal DVR:** 8 GB CF-card installed  
**Audio/Telephony:** bidirectional, VoIP, IP-Telephony  
**Power Sup. • In/Out:** PoE or MX30V • via ExtIO  
**Software Features:** FTP, E-Mail, video alarm management, video motion, Multiview, event search  
**Arming • Triggering:** 365 day schedule • multiple events  
**External Storage:** up to 1 Terabyte on PC/Server/NAS

**NEW** Internal flash recording



**Model:** M12M-Web-D43  
**Indoor/Outdoor:** In/Outdoor, weatherproof, -30°...+60°C  
**Lenses: (eq. 35mm)** Wide-angle only (43mm, F 2.0) no other lens available  
**Resolution:** 3MEGA (2048x1536 pixels), color  
**Pan/Tilt/Zoom:** continuous 8x zoom & pan/tilt (digital)  
**Frame Rate (Mono):** 30 fps VGA • 30 fps CIF • 10 fps Mega  
**Sensitivity:** 1 lux (t=1/60sec) • 0,05 lux (t=1/1sec)  
**Interfaces:** ISDN, Ethernet 10/100 Mbps  
**Internal DVR:** ./.  
**Audio/Telephony:** ./.  
**Power Sup. • In/Out:** PoE or MX30V • ./.  
**Software Features:** Logo generator, FTP, E-Mail  
**Arming • Triggering:** 7 day schedule • multiple events  
**External Storage:** FTP, triggered by events/time schedule



**Model:** M12D-IT-DNight-D43N43  
**Indoor/Outdoor:** Dual lens outdoor, -30°...+60°C  
**Lenses:** 2 Wide-angle (43mm, F 2.0), DNight: automatic Day/Night switching  
**Resolution:** 2 x VGA (je 640x480 pixels), color & B/W  
**Pan/Tilt/Zoom:** continuous 8x zoom & pan/tilt (digital)  
**Frame Rate (Mono):** 30 fps VGA • 30 fps CIF  
**Sensitivity:** 0,1 lux (t=1/60sec) • 0,005 lux (t=1/1sec)  
**Interfaces:** ISDN, Ethernet 10/100 Mbps, RS232  
**Internal DVR:** up to 16 GB with SD card  
**Audio/Telephony:** bidirectional, VoIP, IP-Telephony  
**Power Sup. • In/Out:** PoE or MX30V • 1xIN, 1xOUT  
**Software Features:** FTP, E-Mail, video alarm management, video motion, Multiview, event search  
**Arming • Triggering:** 365 day schedule • multiple events  
**External Storage:** up to 1 Terabyte on PC/Server/NAS



**Model:** M12D-Sec-D22D153  
**Indoor/Outdoor:** Dual lens outdoor, -30°...+60°C  
**Lenses:** Super Wide Angle (22mm, 90°, F 2.0), tele (135mm, F 2.5)  
**Resolution:** 2 x 3MEGA (je 2048x1536 pixels), color  
**Pan/Tilt/Zoom:** continuous 8x zoom & pan/tilt (digital)  
**Frame Rate (Mono):** 30 fps VGA • 30 fps CIF • 10 fps Mega  
**Sensitivity:** 1 lux (t=1/60sec) • 0,05 lux (t=1/1sec)  
**Interfaces:** ISDN, Ethernet 10/100 Mbps, RS232  
**Internal DVR:** up to 16 GB with SD card  
**Audio/Telephony:** bidirectional, VoIP, IP-Telephony  
**Power Sup. • In/Out:** PoE or MX30V • 1xIN, 1xOUT  
**Software Features:** FTP, E-Mail, video alarm management, video motion, Multiview, event search  
**Arming • Triggering:** 365 day schedule • multiple events  
**External Storage:** up to 1 Terabyte on PC/Server/NAS



**Model:** M12D-Sec-DNight-D43N43  
**Indoor/Outdoor:** Dual lens outdoor, -30°...+60°C  
**Lenses:** 2 Wide-angle (43mm, F 2.0), DNight: automatic Day/Night switching  
**Resolution:** 1 x 3MEGA (2048x1536 pixels), color 1 x MEGA (1280x960 pixels), B/W  
**Pan/Tilt/Zoom:** continuous 8x zoom & pan/tilt (digital)  
**Frame Rate (Mono):** 30 fps VGA • 30 fps CIF • 10 fps Mega  
**Sensitivity:** 0,1 lux (t=1/60sec) • 0,005 lux (t=1/1sec)  
**Interfaces:** ISDN, Ethernet 10/100 Mbps, RS232  
**Internal DVR:** up to 16 GB with SD card  
**Audio/Telephony:** bidirectional, VoIP, IP-Telephony  
**Power Sup. • In/Out:** PoE or MX30V • 1xIN, 1xOUT  
**Software Features:** FTP, E-Mail, video alarm management, video motion, Multiview, event search  
**Arming • Triggering:** 365 day schedule • multiple events  
**External Storage:** up to 1 Terabyte on PC/Server/NAS



**Model:** M12D-Sec-DNight-D22N22  
**Indoor/Outdoor:** Dual lens outdoor, -30°...+60°C  
**Lenses:** Super Wide Angle (22mm, F 2.0), DNight: automatic Day/Night switching  
**Resolution:** 1 x 3MEGA (2048x1536 pixels), color 1 x MEGA (1280x960 pixels), B/W  
**Pan/Tilt/Zoom:** continuous 8x zoom & pan/tilt (digital)  
**Frame Rate (Mono):** 30 fps VGA • 30 fps CIF • 10 fps Mega  
**Sensitivity:** 0,1 lux (t=1/60sec) • 0,005 lux (t=1/1sec)  
**Interfaces:** ISDN, Ethernet 10/100 Mbps, RS232  
**Internal DVR:** up to 16 GB with SD card  
**Audio/Telephony:** bidirectional, VoIP, IP-Telephony  
**Power Sup. • In/Out:** PoE or MX30V • 1xIN, 1xOUT  
**Software Features:** FTP, E-Mail, video alarm management, video motion, Multiview, event search  
**Arming • Triggering:** 365 day schedule • multiple events  
**External Storage:** up to 1 Terabyte on PC/Server/NAS



**Model:** M12D-Sec-R8  
**Indoor/Outdoor:** Dual lens outdoor, -30°...+60°C  
**Lenses:** Super Wide Angle (22mm, 90°, F 2.0), 43mm, 135mm  
**Resolution:** 1 x 3MEGA (2048x1536 pixels), color 1 x MEGA (1280x960 pixels), B/W  
**Pan/Tilt/Zoom:** continuous 8x zoom & pan/tilt (digital)  
**Frame Rate (Mono):** 30 fps VGA • 30 fps CIF • 10 fps Mega  
**Sensitivity:** 0,1 lux (t=1/60sec) • 0,005 lux (t=1/1sec)  
**Interfaces:** ISDN, Ethernet 10/100 Mbps, RS232  
**Internal DVR:** 8 GB CF-card installed  
**Audio/Telephony:** bidirectional, VoIP, IP-Telephony  
**Power Sup. • In/Out:** PoE or MX30V • 1xIN, 1xOUT  
**Software Features:** FTP, E-Mail, video alarm management, video motion, Multiview, event search  
**Arming • Triggering:** 365 day schedule • multiple events  
**External Storage:** up to 1 Terabyte on PC/Server/NAS

**NEW** Internal flash recording

# MOBOTIX HiRes IP Cameras 2008

- 3 -



The HiRes Video Company



**Model:** **D22Mi-Basic-D22**  
**Indoor/Outdoor:** Indoor, IP54, -30°...+50°C  
**Lenses: (eq. 35mm)** Super Wide Angle (22mm, 90°, F 2.0)  
**Resolution:** VGA (640x480 pixels), color  
**Pan/Tilt/Zoom:** ./.  
**Frame Rate (Mono):** 16 fps VGA • 16 fps CIF  
**Sensitivity:** 1 lux (t=1/60sec) • 0,05 lux (t=1/1sec)  
**Interfaces:** Ethernet 10/100 Mbps  
**Internal DVR:** ./.  
**Audio/Telephony\*:** ./.  
**Power Sup. • In/Out:** PoE or MX30V • ./.  
**Software Features:** FTP, E-Mail, video alarm management, video motion, Multiview, event search  
**Arming • Triggering:** ./.  
**External Storage:** ./.



**Model:** **D22M-IT-D22**  
**Indoor/Outdoor:** In/Outdoor, weatherproof, -30°...+60°C  
**Lenses: (eq. 35mm)** Super Wide Angle (22mm, 90°, F 2.0)  
**Resolution:** VGA (640x480 pixels), color  
**Pan/Tilt/Zoom:** continuous 8x zoom & pan/tilt (digital)  
**Frame Rate (Mono):** 30 fps VGA • 30 fps CIF  
**Sensitivity:** 1 lux (t=1/60sec) • 0,05 lux (t=1/1sec)  
**Interfaces:** Ethernet 10/100 Mbps, USB, ext. Audio  
**Internal DVR:** up to 16 GB with SD card  
**Audio/Telephony\*:** bidirectional, VoIP, IP-Telephony\*  
**Power Sup. • In/Out:** PoE or MX30V • via ExtIO  
**Software Features:** FTP, E-Mail, video alarm management, video motion, Multiview, event search  
**Arming • Triggering:** 365 day schedule • multiple events  
**External Storage:** up to 1 Terabyte on PC/Server/NAS



**Model:** **D22M-Sec**  
**Indoor/Outdoor:** In/Outdoor, weatherproof, -30°...+60°C  
**Lenses: (eq. 35mm)** Super Wide Angle (22mm, 90°, F 2.0), 32mm, 43mm, 65mm, 135mm  
**Resolution:** 3MEGA (2048x1536 pixels), color  
**Pan/Tilt/Zoom:** continuous 8x zoom & pan/tilt (digital)  
**Frame Rate (Mono):** 30 fps VGA • 30 fps CIF • 10 fps Mega  
**Sensitivity:** 1 lux (t=1/60sec) • 0,05 lux (t=1/1sec)  
**Interfaces:** Ethernet 10/100 Mbps, USB, ext. Audio  
**Internal DVR:** up to 16 GB with SD card  
**Audio/Telephony\*:** bidirectional, VoIP, IP-Telephony\*  
**Power Sup. • In/Out:** PoE or MX30V • via ExtIO  
**Software Features:** FTP, E-Mail, video alarm management, video motion, Multiview, event search  
**Arming • Triggering:** 365 day schedule • multiple events  
**External Storage:** up to 1 Terabyte on PC/Server/NAS



**Model:** **D22M-Sec-Night**  
**Indoor/Outdoor:** In/Outdoor, weatherproof, -30°...+60°C  
**Lenses: (eq. 35mm)** Super Wide Angle (22mm, 90°, F 2.0), 32mm, 43mm, 65mm, 135mm  
**Resolution:** MEGA (1280x960 pixels), B/W  
**Pan/Tilt/Zoom:** continuous 8x zoom & pan/tilt (digital)  
**Frame Rate (Mono):** 30 fps VGA • 30 fps CIF • 10 fps Mega  
**Sensitivity:** 0,1 lux (t=1/60sec) • 0,005 lux (t=1/1sec)  
**Interfaces:** Ethernet 10/100 Mbps, USB, ext. Audio  
**Internal DVR:** up to 16 GB with SD card  
**Audio/Telephony\*:** bidirectional, VoIP, IP-Telephony\*  
**Power Sup. • In/Out:** PoE or MX30V • via ExtIO  
**Software Features:** FTP, E-Mail, video alarm management, video motion, Multiview, event search  
**Arming • Triggering:** 365 day schedule • multiple events  
**External Storage:** up to 1 Terabyte on PC/Server/NAS



**Model:** **Q22M-Basic**  
**Indoor/Outdoor:** Indoor, IP54, -30°...+50°C  
**Lenses: (eq. 35mm)** Hemispheric (11mm, 360°, F 2.0), Super Wide Angle (22mm, 90°, F 2.0)  
**Resolution:** VGA (640x480 pixels), color  
**Pan/Tilt/Zoom:** digital PTZ via MxControlCenter  
**Frame Rate (Mono):** 16 fps VGA • 16 fps CIF  
**Sensitivity:** 1 lux (t=1/60sec) • 0,05 lux (t=1/1sec)  
**Interfaces:** Ethernet 10/100 Mbps  
**Internal DVR:** ./.  
**Audio/Telephony\*:** ./.  
**Power Sup. • In/Out:** PoE or MX30V  
**Software Features:** distortion correction in MxCC, FTP, E-Mail, video alarm manag., multiview  
**Arming • Triggering:** ./.  
**External Storage:** ./.



**Model:** **Q22M-Sec**  
**Indoor/Outdoor:** In/Outdoor, weatherproof, -30°...+60°C  
**Lenses: (eq. 35mm)** Hemispheric (11mm, 360°, F 2.0), Super Wide Angle (22mm, 90°, F 2.0)  
**Resolution:** 3MEGA (2048x1536 pixels), color  
**Pan/Tilt/Zoom:** continuous 8x zoom & pan/tilt (digital)  
**Frame Rate (Mono):** 30 fps VGA • 10 fps Mega • 4 fps 3MEGA  
**Sensitivity:** 1 lux (t=1/60sec) • 0,05 lux (t=1/1sec)  
**Interfaces:** Ethernet 10/100 Mbps, USB, ext. Audio  
**Internal DVR:** up to 16 GB with SD card  
**Audio/Telephony\*:** bidirectional, VoIP, IP-Telephony  
**Power Sup. • In/Out:** PoE or MX30V • via ExtIO  
**Software Features:** distortion correction in the camera, FTP, E-Mail, video alarm manag.  
**Arming • Triggering:** 365 day schedule • multiple events  
**External Storage:** up to 1 Terabyte on PC/Server/NAS



**Model:** **D12Di-IT**  
**Indoor/Outdoor:** Dual lens indoor, IP54, -30°...+60°C  
**Lenses: (eq. 35mm)** Super Wide Angle (22mm, 90°, F 2.0)  
**Resolution:** 2 x VGA (je 640x480), color & B/W  
**Pan/Tilt/Zoom:** continuous 8x zoom & pan/tilt (digital)  
**Frame Rate (Mono):** 30 fps VGA • 30 fps CIF  
**Sensitivity:** 1 lux (t=1/60sec) • 0,05 lux (t=1/1sec)  
**Interfaces:** ISDN, Ethernet 10/100 Mbps, RS232  
**Internal DVR:** up to 16 GB with SD card  
**Audio/Telephony:** bidirectional, VoIP, IP-Telephony  
**Power Sup. • In/Out:** PoE or MX30V • 1xIN, 1xOUT  
**Software Features:** FTP, E-Mail, video alarm management, video motion, Multiview, event search  
**Arming • Triggering:** 365 day schedule • multiple events  
**External Storage:** up to 1 Terabyte on PC/Server/NAS

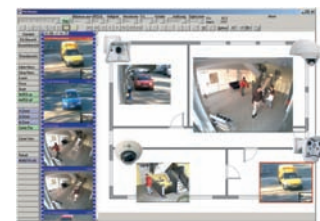


**Model:** **D12Di-Sec**  
**Indoor/Outdoor:** Dual lens indoor, IP54, -30°...+60°C  
**Lenses: (eq. 35mm)** Super Wide Angle (22mm, 90°, F 2.0), 32mm, 43mm, 65mm, 135mm  
**Resolution:** 1 x 3MEGA (2048x1536 pixels), color  
**Pan/Tilt/Zoom:** continuous 8x zoom & pan/tilt (digital)  
**Frame Rate (Mono):** 30 fps VGA • 30 fps CIF • 10 fps Mega  
**Sensitivity:** 1 lux (t=1/60sec) • 0,05 lux (t=1/1sec)  
**Interfaces:** ISDN, Ethernet 10/100 Mbps, RS232  
**Internal DVR:** up to 16 GB with SD card  
**Audio/Telephony:** bidirectional, VoIP, IP-Telephony  
**Power Sup. • In/Out:** PoE or MX30V • 1xIN, 1xOUT  
**Software Features:** FTP, E-Mail, video alarm management, video motion, Multiview, event search  
**Arming • Triggering:** 365 day schedule • multiple events  
**External Storage:** up to 1 Terabyte on PC/Server/NAS



**Model:** **D12Di-Sec-180°**  
**Indoor/Outdoor:** Dual lens indoor, IP54, -30°...+60°C  
**Lenses: (eq. 35mm)** Super Wide Angle (22mm, 90°, F 2.0), 32mm, 43mm, 65mm, 135mm  
**Resolution:** 1 x 3MEGA (2048x1536 pixels), color  
**Pan/Tilt/Zoom:** continuous 8x zoom & pan/tilt (digital)  
**Frame Rate (Mono):** 30 fps VGA • 30 fps CIF • 10 fps Mega  
**Sensitivity:** 1 lux (t=1/60sec) • 0,05 lux (t=1/1sec)  
**Interfaces:** ISDN, Ethernet 10/100 Mbps, RS232  
**Internal DVR:** up to 16 GB with SD card  
**Audio/Telephony:** bidirectional, VoIP, IP-Telephony  
**Power Sup. • In/Out:** PoE or MX30V • 1xIN, 1xOUT  
**Software Features:** FTP, E-Mail, video alarm management, video motion, Multiview, event search  
**Arming • Triggering:** 365 day schedule • multiple events  
**External Storage:** up to 1 Terabyte on PC/Server/NAS

**MxControlCenter for Windows Client:**  
 High performance with up to 40 smooth video streams live/stored (on a single PC), integration of analog and digital PTZ cameras with joystick control, alarm management, event search



Lens options	L22 Day	L22 Night	L32 Day	L32 Night	L43 Day	L43 Night	L65 Day	L65 Night	L135 Day	L135 Night
	• Standard delivery (incl.) • Optional lens (excl.)									
<b>M22M-IT-D22</b>	•	-	•	-	•	-	•	-	•	-
<b>M22M-Sec</b>	•	-	•	-	•	-	•	-	•	-
<b>M22M-Sec-Night</b>	-	•	-	•	-	•	-	•	-	•
<b>M12M-Web-D43</b>	-	-	-	-	•	•	-	-	-	-
<b>M12D-IT-DNight-D43N43</b>	-	-	-	-	•	•	-	-	-	-
<b>M12D-Sec-D22D135</b>	•	-	-	-	-	-	-	-	•	-
<b>M12D-Sec-DNight-D22N22</b>	•	•	-	-	-	-	-	-	-	-
<b>M12D-Sec-DNight-D43N43</b>	-	-	-	-	•	•	-	-	-	-
<b>D12Di-IT/D12Di-Sec</b>	•	•	•	•	•	•	•	•	•	•
<b>D22Mi-Basic-D22</b>	•	-	•	-	•	-	•	-	•	-
<b>D22M-IT-D22</b>	•	-	•	-	•	-	•	-	•	-
<b>D22M-IT-Night-N22</b>	-	•	-	•	-	•	-	•	-	•
<b>D22M-Sec</b>	•	-	•	-	•	-	•	-	•	-
<b>D22M-Sec-Night</b>	-	•	-	•	-	•	-	•	-	•

\*via ExtIO

Subject to change without notice



# MOBOTIX HiRes IP Camera Accessories 2008

- 4 -



The HiRes Video Company

M12/M22 Access.



**Part Name:** SecureFlex-Wall-/Ceiling Mount  
**Description:**

- protected concealed cabling
- ± 90° right/left pivoting
- 70° down tilt
- covers RJ45 wall outlets
- compatible with M1/M10/M12-cameras



**M12/M22-Pole Mount**

- 3mm stainless steel, white
- mast or pole mounting
- Pole circumference from 60 to 180mm
- 2 x metal mounting bands, fittings and grommet included



**Cam-IO-PoE / AC / ACplus**

- Interface for external sensors and equipment (door contact, light, etc.)
- 2xRelais-Out, 2xInput, backup, audio
- Power supply via network / 230V / 230V battery buffered

D12 Accessories



**D12 Vandalism Set**

- Reinforced dome (3mm Polyc.)
- Stainless steel vandalism ring (matt, polished or white, silver, black powder-coated)



**D12 Wall Mount**

- Weatherproof (IP65) for D12D-Dome
- robust and UV resistant PBT-30GF
- concealed cabling
- covers RJ45 wall outlets
- possible to fit WLAN or GSM/GPRS equipment inside housing



**D12 Pole Mount**

- 3mm stainless steel, powder-coated
- Pole diam.: 60 to 180mm
- Incl. mounting supplies

D22 Accessories



**Part Name:** D22 Vandalism Set  
**Description:**

- Reinforced dome (3mm Polyc.)
- Stainless steel vandalism ring (matt, polished or white, silver, black powder-coated)



**D22 On-Wall Set**

- On-wall mount incl. mounting parts
- Concealed cabling
- Ø 165x37mm/6.5x1.5in
- excluding camera



**D22 In-Ceiling Set**

- In-ceiling set incl. mounting parts
- Easy mounting from front
- Ø 150mm/5.9in diameter
- excluding camera



**D22 Wall Mount**

- Weather protection (IP65) for D22
- Covers RJ45 wall outlets
- Space for expansion modules (WiFi)



**D22 Pole Mount**

- 3mm stainless steel, powder-coated
- Pole diam.: 60 to 180mm
- Incl. mounting supplies



Accessories All Cams



**Part Name:** Network Power Adapter Set  
**Description:** Power supply via network cabling  
 All camera models (MX30V)



**Network Power Box for 4 cameras**  
 Power supply for DIN rails  
 All camera models (MX30V)



**Network Power Rack (8/20 cameras)**  
 Power supply via network cabling  
 All camera models (MX30V)



**M12-DevKit**

- M12 main board incl. sound module for connecting up to 2 cameras
- without housing for concealed installation
- housing available separately



**ExtIO**

- Each with 2 In- and Output contacts 8-24V
- Microphone with adjustable volume control, speaker, status LEDs
- USB interface
- Temperature sensor, 2 buttons



Lenses

L22 Super Wide Angle (90° x 67°)



L32 Wide Angle (60° x 45°)



L43 Wide Angle (45° x 34°)



L65 Tele (31° x 23°)



L135 Tele (15° x 11°)



V24-54 CSVario\*



\* M22M special model

Subject to change without notice