



The HiRes Video Company

MOBOTIX

Q22 with in-ceiling mount



## Allround Easy. Allround Secure.

MOBOTIX ultra-compact, weatherproof IP-Dome camera is so inconspicuous that many do not recognize it to be a camera. Thanks to its 360° allround view, the camera can monitor and record, event-driven, an entire room.



MxEasy

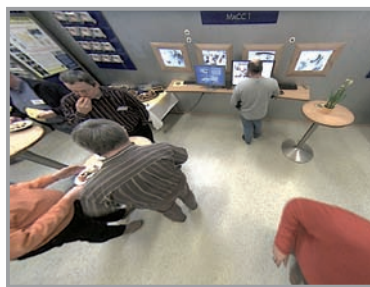


Image correction



Digital zoom/pan

### Powerful performance in complete video solutions ...

- Hemispherical allround view for complete room coverage
- Digital, continuous zooming and panning
- Robust and maintenance-free, without mechanically moving parts
- Event-controlled, complete room recording directly in the camera
- Alarm function, speaker and microphone integrated
- Discreet and inconspicuous design

*For further information:*

*Tritech Associates Inc.*

*732.282.1444 or charlesberner@taisecurity.com*

The German company MOBOTIX AG is known as the leading pioneer in network camera technology and its decentralized concept has made high-resolution video systems cost efficient.

MOBOTIX AG • D-67657 Kaiserslautern • Tel: +49-631-3033-103 • Fax: +49-631-3033-190 • sales@mobotix.com

HiRes

### 3 Megapixel

2048 x 1536  
software zoom

Skyline

### Format free

each image format  
freely definable

### 30 Frames/s

VGA (640 x 480)  
12 F/s Mega

### Virtual PTZ

digital pan, tilt,  
zoom

### Backlight

safe using CMOS  
without mechanical iris

### Internal DVR

internal via SD card,  
external via Network

Win/Lin/Mac

### Recording

via Network on PC  
up to 1 Terabyte

microphone &amp; speaker

### Audio

bi-directional via IP,  
variable framerates

SIP-Client with video

### IP-Telephony

alarm notify,  
cam remote control

### Video motion

multiple windows  
precision pixel-based

-22°F ... +140°F

### Weatherproof

-30° ... +60°C, IP65  
no heating necessary

IEEE 802.3af

### PoE

network power  
even in winter

### Robust

no moving parts  
fiber glass housing

MxCC

### Licence free

Video-Management-  
Software

## Technical Specifications Q22 Hemispheric Camera

<b>Models</b>	Basic, Sec	<b>Virtual PTZ</b>	Digital Pan/Tilt/Zoom, continuous 8x zoom
<b>Lenses</b>	L11 (hemispherical) L22 (90° x 67°)	<b>Alarm/Events</b>	Triggering of events by integrated multiple-window motion detection, external signal, temperature sensor, notification over email, FTP, IP-Telephony (VoIP, SIP), visual/acoustic alarm Pre- and post-alarm images
<b>Sensitivity</b>	Color: 1 lux (t=1/60 sec), 0,05 lux (t=1/1 sec)	<b>Audio</b>	Integrated microphone and speaker, Line-In/Line-Out, lip-synchronous audio, two-way speaker, audio recording
<b>Sensors</b>	1/2" CMOS, progressive scan	<b>Interfaces</b>	Ethernet 10/100, USB, Audio (microphone/speaker)
<b>Max. image resolution</b>	Color: 2048 x 1536 (3 Mega)	<b>Audio/Telephony</b>	VoIP, SIP, two-way speaker, remote controlling of the camera in- and outputs, event notification
<b>Image format</b>	2048 x 1536, 1280 x 960, 1024 x 768, 800 x 600, 768 x 576 (D1), 704 x 576 (TV-PAL), 640 x 480, 384 x 288, 352 x 288, 320 x 240, 160 x 120; free image format selection (e.g. 1000 x 200 for skyline)	<b>Security</b>	User-/Group management, HTTPS/SSL, IP address filter, IEEE 802.1x, Intrusion Detection
<b>Max frame rate (M-JPEG) (Live/Recording)</b>	VGA: 16 fps, TV-PAL: 12 fps, Mega: 6 fps, 3Mega: 4 fps	<b>Certificates</b>	BGV C9 ("UVV"), EMV (living environments, industry), EN 50155 (shock, vibration, temperature), CE, FCC
<b>Video stream (MxPEG) (Live/Recording/Audio)</b>	VGA: 30 fps, TV-PAL: 24 fps, Mega: 14 fps, 3Mega: 10 fps	<b>Power supply</b>	Year-round Power over Ethernet (IEE 802.3af; Class 0), Netpower-Adapter, typ. 4 W
<b>Image compression</b>	MxPEG, M-JPEG, JPG, H.263 (Video-VoIP-Telephony)	<b>Operating conditions</b>	IP65 (DIN EN 60529), -30° to +60 °C (-22°F to +140°F)
<b>Internal DVR</b>	Slot for SD card (up to 16 GB)	<b>Dimensions</b>	Ø x H: 16 x 5 cm, Weight: ca. 450 g
<b>External storage</b>	Directly on NAS and PC/Server without additional recording software	<b>Standard delivery</b>	Housing (high-resistance composites - PBT-PC), white, lens protection (transparent polycarbonate), incl. 360° lens, mounting parts, allen wrench, patch cabel S/FTP yellow 8-wire 50 cm (double-shielded), manual, software
<b>Software (inclusive)</b>	Video-Management-Software MxEasy, Control room software MxControlCenter		
<b>Image processing</b>	Backlight compensation, automatic white balance, image distortion correction, video sensor (motion detection)		

Technical information subject to change without notice!

## Q22 Hemispheric

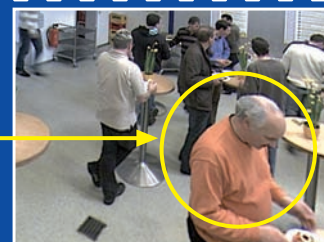
## Available Accessories Q22 Hemispheric Camera

<p><b>Standard Housing</b> MX-Q22M-Sec</p>  <ul style="list-style-type: none"> <li>• Hemispherical allround view 360°</li> <li>• For wall and ceiling mounting</li> <li>• Robust and maintenance-free, without mechanically moving parts</li> </ul>	<p><b>Vandalism Housing</b> MX-Q22M-Sec-Vandal</p>  <ul style="list-style-type: none"> <li>• Stainless steel vandalism housing incl. lens protection</li> <li>• Matt, polished or white, silver, black powder-coated</li> </ul>	<p><b>In-Ceiling-Set</b> MX-D22M-OPT-IC</p>  <ul style="list-style-type: none"> <li>• In-Ceiling set incl. mounting parts</li> <li>• Easy mounting from front</li> <li>• 150 mm installation standard</li> </ul>	<p><b>ExtIO Extension Module</b> MX-ExtIO</p>  <ul style="list-style-type: none"> <li>• Microphone/speaker</li> <li>• PIR sensor for motion detection, temperature sensor</li> <li>• Integrated switch functions</li> </ul>
--	--	--	--

## MxEasy

## Image Distortion Correction

## Digital Zoom/Tilt



## HiRes Video Innovations

The German company MOBOTIX AG is known as the leading pioneer in network camera technology and its decentralized concept has made high-resolution video systems cost efficient.

MOBOTIX AG • D-67657 Kaiserslautern • Tel: +49-631-3033-103 • Fax: +49-631-3033-190 • sales@mobotix.com